

The background of the image is a vibrant watercolor-style pattern. It features large, overlapping washes of color, primarily in shades of bright pink, magenta, and various tones of blue (from light sky blue to deep cerulean). The colors blend and bleed into each other, creating soft, organic shapes and textures. The overall effect is bright and artistic.

Phase 2 flashcards

Phase 2 Sound Mat



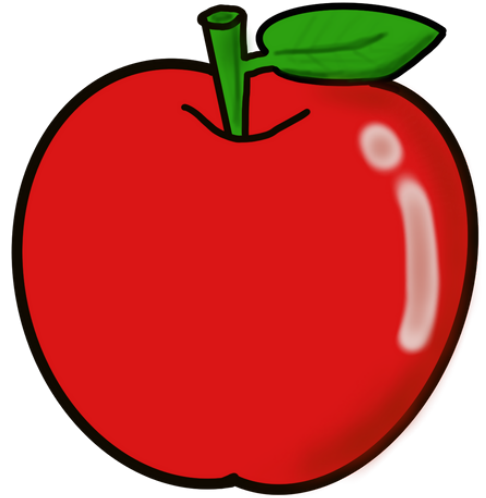
Phase 2 Sound Mat



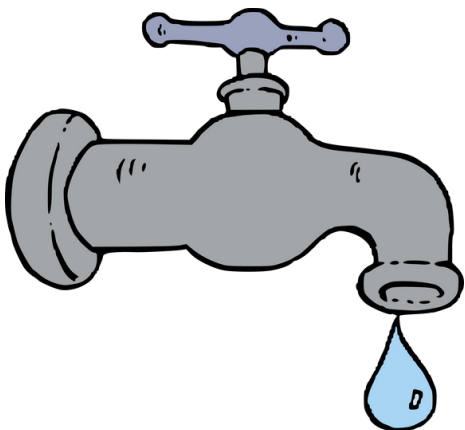
S



a



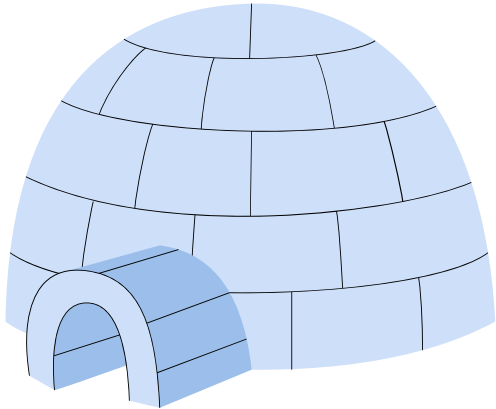
t



p



i



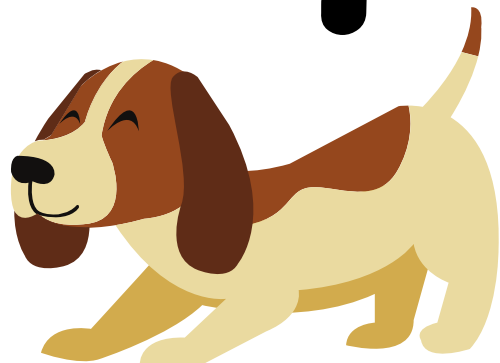
n



m



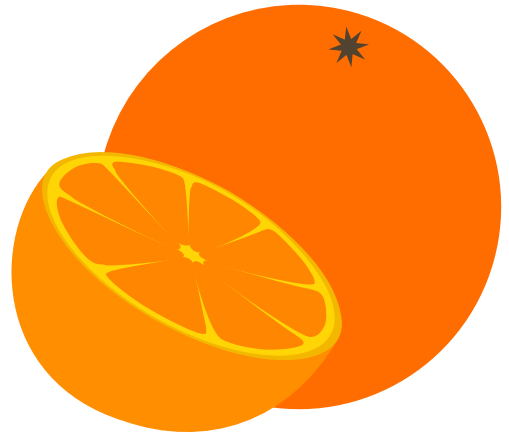
d



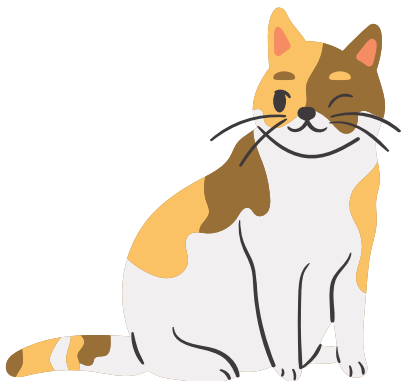
g



o



c



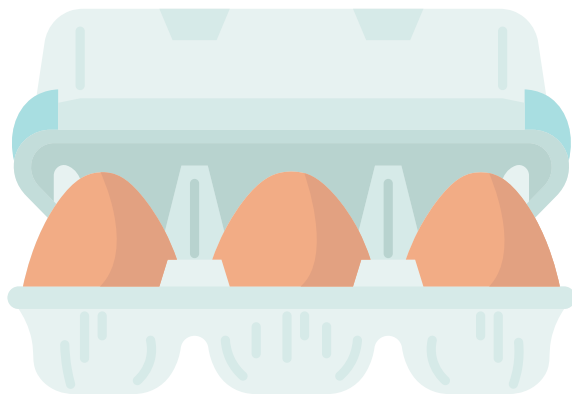
k



ck



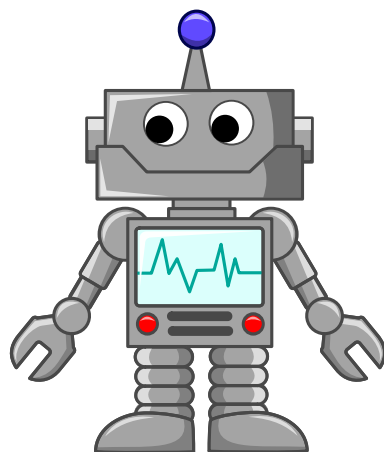
e



u



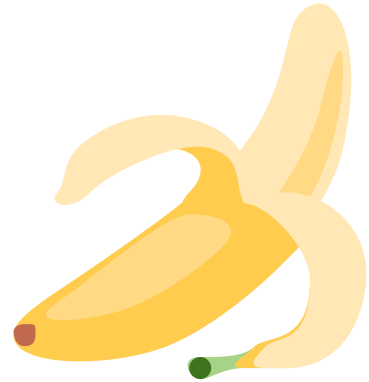
r



h



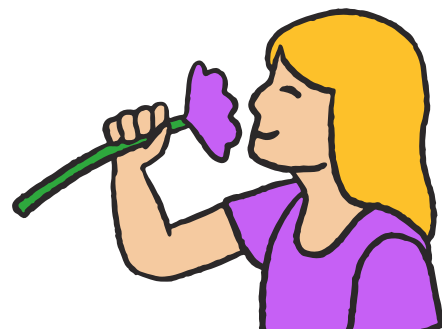
b



f



ff



L



ll



ss



s

a

t

p

i

n

m

d

g

o

c

k

ck

e

u

r

h

b

f

ff

l

ll

ss

